


CENTAUR FONT

V2.22 centaurs1.ttf

This font was created to make available glyphs of the Centaurean bodies (such as Chiron, Pholus and Nessus), and those bodies out past Neptune/Pluto (such as Eris and Sedna.) Several interesting minor planets are also included. Several of these bodies were recently discovered and therefore do not have as yet any universally accepted symbols. Thus many of the minor planets on this font have two or more symbols, allowing you to choose the ones that you feel most comfortable with. (I've also included the two most commonly used glyphs for Pluto.) Also included are symbols for the planets, nodes, and a few other points, including the Galactic Center. There are even symbols for Fire, Earth, Air and Water. (And I've also thrown in a picture of a Centaur, just for fun.)

This is version two of this font, called centaurs1.ttf. It has replaced version one, centaurs.ttf, to make it compatible with Microsoft Word 2016 and later. (Some of the glyphs on the earlier version no longer were visible in the latest versions of Word, so the font had to be redesigned.)

If you have a copy of centaurs.ttf, I will be happy to replace it with this version at no charge, just send me an email request. Please note that while centaurs1.ttf contains all the symbols that were on the previous version, they have been rearranged on the new version and use different keys to access them. Also note that a few new symbols have been added to the new version that were not on centaurs.ttf

I will be updating this font from time to time. What's the latest?  = new glyph for the Centaur Bienor

So, if you have a glyph for one of the Centaurs, or a body from the outer reaches of the solar system, I would love to include it in the next version of this font.

Contact me at

CentaureanAstrology@zanestein.com

This font has been compiled by Zane B Stein, also known as: Mr. Chiron

And distributed by Centaurean Astrology. © 2020

On the next page begins a table showing all the symbols available on this font. There are two groups of symbols accessible on this font.

Note the center column heading reads: **Key or Alt +**

Key:

One set can be accessed simply by typing one of the keys on the keyboard. So, for example, it says the key to **Z** the symbol is the lower-case b.

Alt +:

The other set of symbols are accessible by using a combination of the ALT key and a set of numbers. Hold down the ALT key and type the letter 0 followed by the three-digit number listed, and you will get the glyph. Note: on most computers, you will need to use the keypad numbers on the right side of the computer...not the line of numbers above the letters.... for this to work. (And make sure that the num lock key is on.) So, for example, if it says the way to access the symbol is 0226, you would hold the ALT key down and type 0226.



If your keyboard does not have a keypad like this, you can purchase an external keypad as an add-on from most computer dealers. Alternately you can access all the glyphs from an app that comes with Windows called charmap.exe

More on using this font after the symbol table.

NAME	KEY or ALT +	SYMBOL	NAME	KEY or ALT +	SYMBOL	NAME	KEY or ALT +	SYMBOL
#15874 (1966 TL66)	0238		Chaos	?		Euphrosyne]	
#29981 (1999 TD10)	0239		Chaos	>		Europa	^	
#308933 (2006 SQ372)	:		Chariklo	@		Fire Element	_	
#33128 (1998 BU48)	8		Chariklo	A		Fortuna	`	
#44594 (1999 OX3)	0193		Chiron	B		Galactic Center	a	
#87269 (2000 OO67)	0186		Comet	C		Galactic Center	b	
Aesculapia	!		Crantor	D		G!kun 'homdima	0257	
Air Element	"		Cruithne	E		Gonggong	0255	
Albion	#		Cybele	F		Haumea	c	
Albion	\$		Cyllarus	G		Haumea	d	
Albion	%		Cyllarus	H		1999 HD12	e	
Albion	&		Damocles	I		Hebe	f	
Altjira	(Dark Moon	J		Hector	g	
America)		DeeDee	K		Heracles	h	
Amor	*		Deucalion	L		Herculina	i	
Amphitrite	+		Dioretsa	M		Hermione	j	
Amycus	,		Dziewanna	0256		Hidalgo	k	
Aphidas	0254		Earth	N		Huya	l	
Apollo	-		Earth Element	O		Huya	m	
Apophis	.		Echeclus	P		Hygeia	n	
Arawn	/		Eclipse	Q		Hylonome	o	
Arrokoth	0163		Egeria	R		Hylonome	p	
Asbolus	0		Elatus	S		Hylonome	q	
Ascendant	1		Elatus	T		Hylonome	r	
Atlantis	2		Elatus	U		Icarus	s	
Aurora	3		Eris	V		Interamnia	t	
Bacchus	4		Eris	W		Iris	u	
Bienor	5		Eris	X		Isis	v	
Bienor	0260		Eris	Y		Ixion	{	
Black Sun	6		Eris	Z		Ixion	w	
Borasisi	7		Eros	[Ixion	x	
Ceres	<		Eunomia	\		Ixion	y	
Ceto	=							

NAME	KEY or ALT +	SYMBOL	NAME	KEY or ALT +	SYMBOL	NAME	KEY or ALT +	SYMBOL
Ixion	Z		Orius	0191		South Node	0229	
Ixion			Ouroboros	0192		Sun	0230	
Juno	}		Pallas	0194		Sylvia	0231	
Jupiter	0126		Pandora	0195		Teharonhiawako	0232	
1999 JV127	0161		Pars Fortuna	0196		Thalia	0233	
Ka'epaoka'awela	0181		Pelion	0197		Themis	0234	
Lachesis	0162		Pelion	0198		Thereus	0235	
Leleākūhonua	;		Pelion	0199		Thereus	0236	
Lempo	0240		Pelion	0200		Thereus	0237	
Lilith – Asteroid	0164		Pholus	0201		Toro	0241	
Lilith – Black Moon	0165		Pholus	0202		Typhon	0242	
Lilith – Dark Moon	0166		Pluto	0203		Typhon	0243	
Logos	0167		Pluto	0204		Urania	0244	
Makemake	0168		Praamzius	0205		Uranus	0245	
Makemake	0169		Pre-Chiron	0206		Varda	0246	
Manwe	0170		Priapus	0207		Varuna	0247	
Mars	0171		Psyche	0208		Varuna	0248	
Mercury	0172		Pylenor	0209		Venus	0249	
Metis	0259		Pylenor	0210		Vesta	0250	
Minerva	0174		Pylenor	0211		Vulcano	0251	
Moon	0175		Pylenor	0212		Water Element	0252	
Mors-Sumnus	0176		Quaoar	0213		Wheel	0253	
Nemesis	0177		Quaoar	0214				
Neptune	0178		Quaoar	0215				
Nessus	0179		Rhadamanthus	0216				
Nessus	0180		Rhadamanthus	0217				
Niku	9		Rhea	0218				
North Node	0182		Rhiphonos	0219				
Okyrhoe	0183		Salacia	0220				
Okyrhoe	0184		Sappho	0221				
Okyrhoe	0185		Saturn	0222				
Orcus	0187		Sedna	0223				
Orcus	0188		Sedna	0224				
Orcus	0189		Sedna	0225				
Orcus	0190		Sedna	0226				
			Sila Nunam	0227				

USING THE FONT

Install the font just like you would any font. Simply install it, and you can then use it in any document or email, just like any other font.

****USE IT WITH SOLAR FIRE****

If you have Solar Fire v8 or later, you can now put any of the symbols in this font into your charts. On the next pages, I'll show you how.

SOLAR FIRE v8, v9

Previous versions of Solar Fire enabled you to put a few additional bodies in the astrological chart along with the planets: Chiron, Ceres, Pallas, Juno, Vesta, Hygeia, Astraea, Eris and Sedna. Solar Fire 8 has added a way to put up to 50 additional bodies in a chart at any time, and in fact comes with 65 asteroid glyphs. It also comes with 1,081 extra Asteroids and minor planets including the Centaurs and newly discovered transneptunian objects like Quaoar to choose from, and the ability to download even more from astro.com, and put any of these in the chart as well. Unfortunately it doesn't come with astrological glyphs for any of these, so putting them in charts as they come with the program means having letters and/or numbers for each one you choose instead.

But if you install this Centaurs font you will be able to include the glyphs for any of the bodies it contains in your charts! Here is a brief explanation of the steps to take, once you have installed the font.

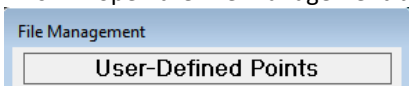
- I. Open Solar Fire v8, and then open a chart that you want to work on.
- II. Right click in any open area in the chart. As an example, some of the areas in the following chart you could right click on are highlighted in yellow:



- III. This will bring up a menu. Click **Displayed User-defined points** from the menu.



- IV. This will open the File Management box,



and you will see that Solar Fire comes with a few options already created. You may wish to click on one of the ones included so that you can see what is in it and how the bodies show in the chart. For example, `AstGlyphs.ptu`

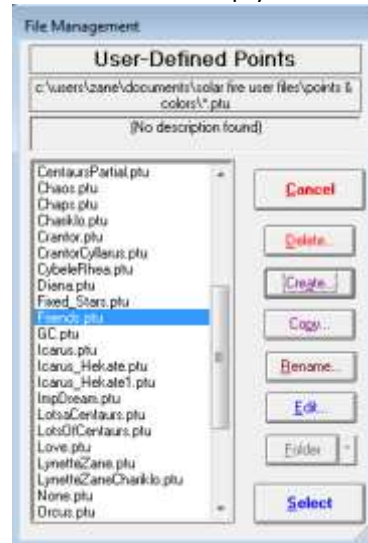
- V. Now that you have looked at one of the included ones, it is time to make your own, so right click again in the chart, again click **Displayed User-defined points**, and click create to start making your own list of bodies which you wish to include in your chart.

- VI. Give the new file a name that will mean something to you, type it in and then click **OK**. Some examples:

- a. If you were creating a file of Centaurean bodies, like Chariklo and Nessus, you might call it Centaurs
- b. If you were creating a file for only one body, say, Eros, you might call it Eros.
- c. Here I'm choosing a group name of Friends:

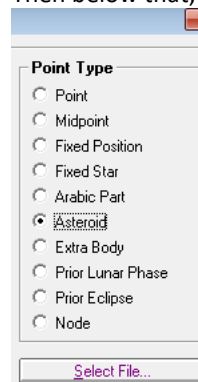


- VII. Your new file will now be in the list of files, but at the moment it is empty.

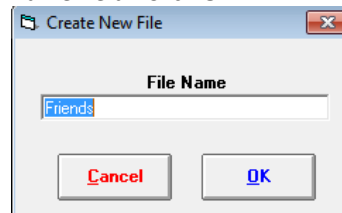


- a. Highlight it and click the **Edit** button.

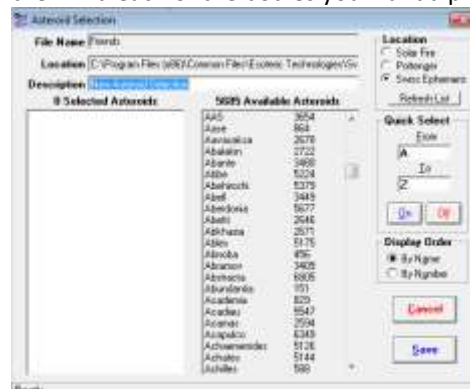
- I. In the new window, click the circle next to **Asteroid**. Then below that, click **Select File**.



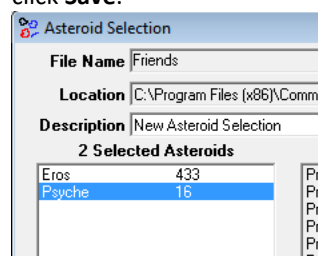
- II. Now you will be creating a second file, and at least for now, will be using the same name. So click **Create**, and you will see Solar Fire put the name you created in the name field. Click **OK**



- III. In the window that comes up, you will see all the asteroids and other extra bodies that have come with Solar Fire. If you the **Display Order by name**, you can then find each of the bodies you want alphabetically.

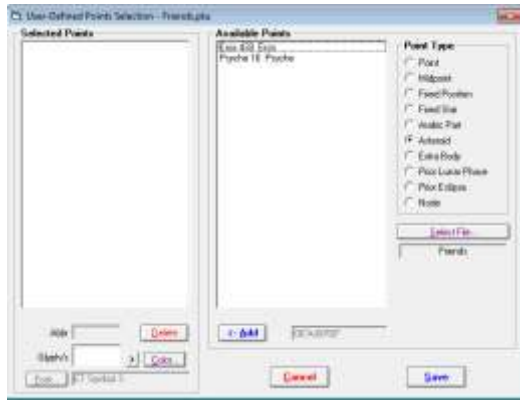


- IV. Click on each body you will want in your list and click on it, and notice it has been copied onto the left side of the window. When you have all the ones you want, click **Save**.



V. You are now back to the previous screen. Make sure you highlight the file name you created (so you don't save it inadvertently in another file name) and then click **Select**

a. Notice all of the bodies you chose are now on the right side of the screen under Available Points.



VI. Click on the first item in your list and click **Add**, and notice it moved over to the left side

VII. Now here is where it gets tricky.

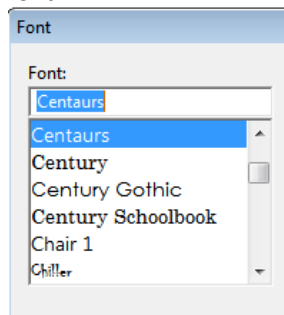
a. You must have a Font on your computer that contains the symbol you want Solar Fire to use. If none of the Fonts contain the symbols for the minor planets you will be adding, you will have to be content with A1, A2, etc for their positions in the chart, or type 2 or 3 letter abbreviations. This is where this Centaurs Font comes in.

b. Now you are going to assign symbols to your chosen bodies from the Centaurs Font

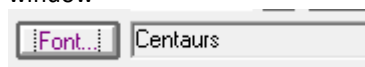
i. Click on the first body on the left in your list to highlight it



ii. At the bottom, click on the **Font** button, and then locate the **Centaurs font**



iii. Highlight the font and click **OK**. You will notice that font name now appears at the bottom of that window



iv. Now click on the arrow **>** to the right of the Glyph window

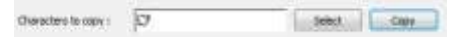
v. This will open up the **Character Map**



vi. Find your symbol and click on it. Notice it jumps off the page

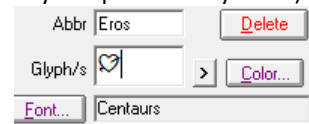


vii. Click **Select**, then click **Copy**



viii. Close the Character Map screen

ix. Erase anything in the **Glyph window**, and then paste the symbol you just copied into that box (with most Windows computers, holding the **CTRL** button down and pressing the **V** key will paste the symbol.)



x. Repeat steps ii through viii for each minor planet you have a symbol for

xi. When you are finished, click **Save**

xii. You are now back to the previous screen. Make sure you **highlight the file name** you created (so you don't save it inadvertently in another file name) and then click **Select**

xiii. Your symbols will now appear in the chart you are working on, and, until you decide to right click in the chart again, and click None for Displayed User-defined Points, in every other chart you look at.

